

Research group: Florence CHAINIAUX



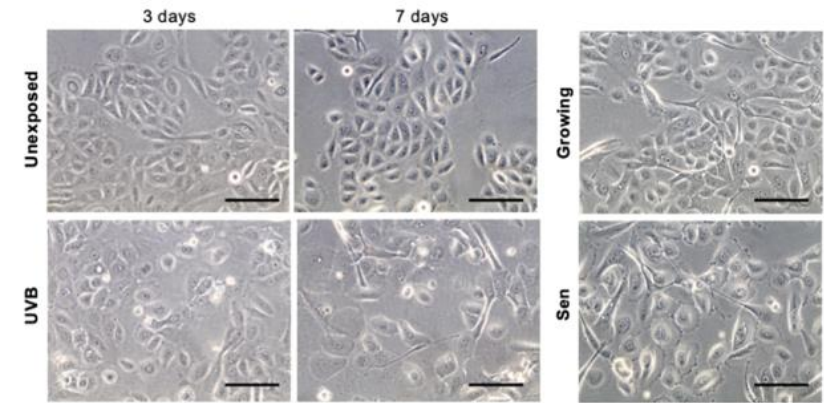
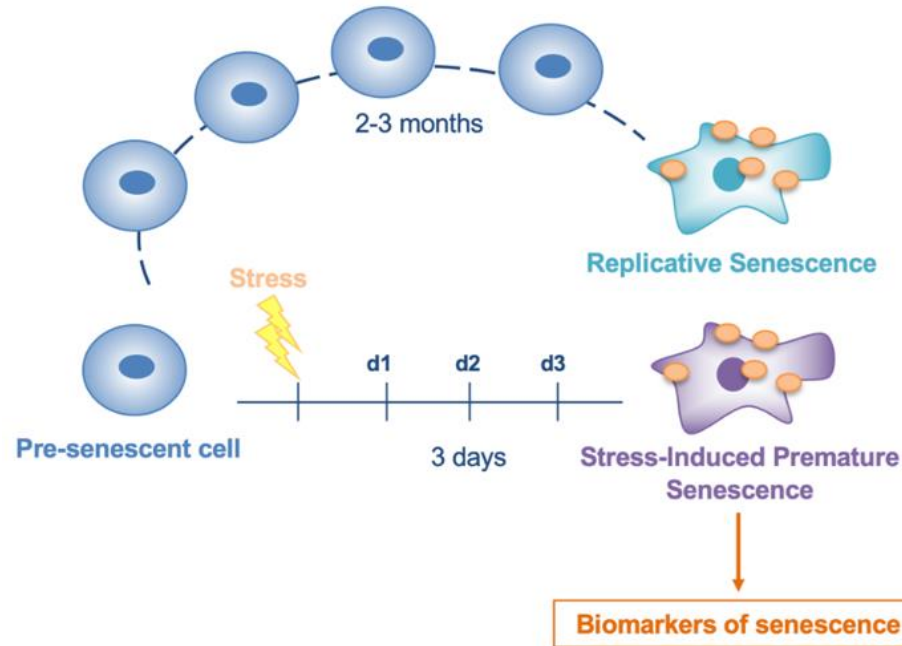
Stress and ageing

Understanding the molecular mechanisms of ageing, focusing on the interconnection between stress and premature cellular senescence

Laboratory of Cellular and
Molecular Biology
(URBC)



Research group: Florence CHAINIAUX



Impact of UVB exposures on the morphology of normal human epidermal keratinocytes (Bauwens E).

The Stress and AGEing (SAGE) team is mainly focused on the study of **cellular senescence**. We are mainly interested in the impact of stresses (oxidative stress, UV rays, irradiations) on the development of premature senescence.

Our objectives are:

- 1) to better decipher the **molecular signaling pathways** involved in the onset of senescence
- 2) to evaluate **the impact of senescent cells** on their cellular and matrix microenvironment
- 3) to detect **biomarkers of stress and senescence** in normal or pathological human contexts (cancer, neurogenerative diseases, development of the placenta)

Research group: Florence CHAINIAUX



Group leader

Florence Chainiaux

PhD students

Joëlle Giroud (UNamur/ULille)

Joline Millen (UNamur/UHasselt)

Inès Bouriez (UNamur)

Hélène Marlier (UNamur/UMons)

Master thesis students

Pauline Delvaux

Alexandre Mabbe

Hugo Paulus

