

# Research group: Catherine LINARD



Health geography & Spatial epidemiology

Using tools and approaches of geography to tackle health-related questions

Department of Geography

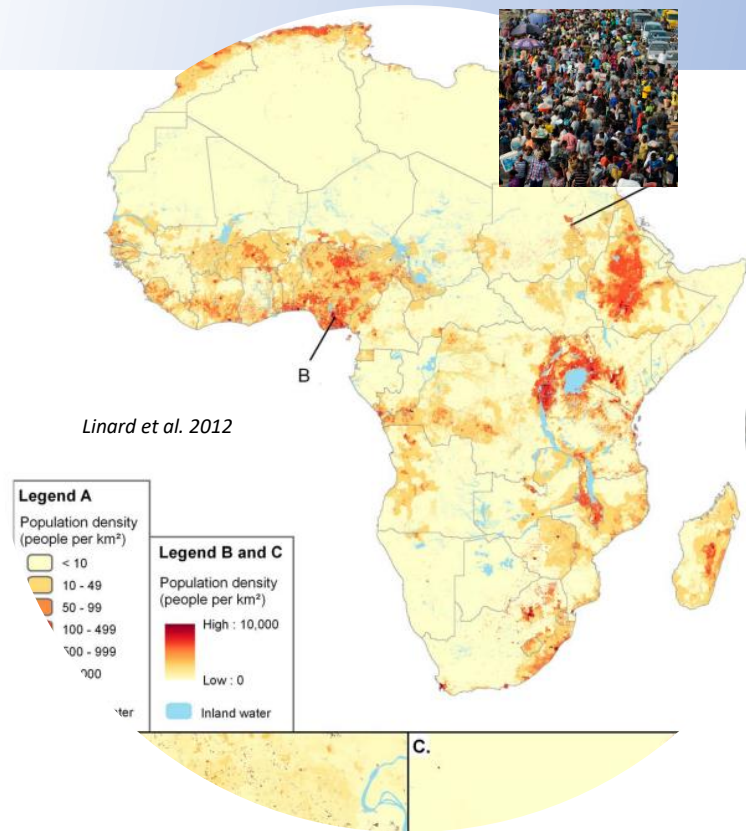


# Research group: Catherine LINARD

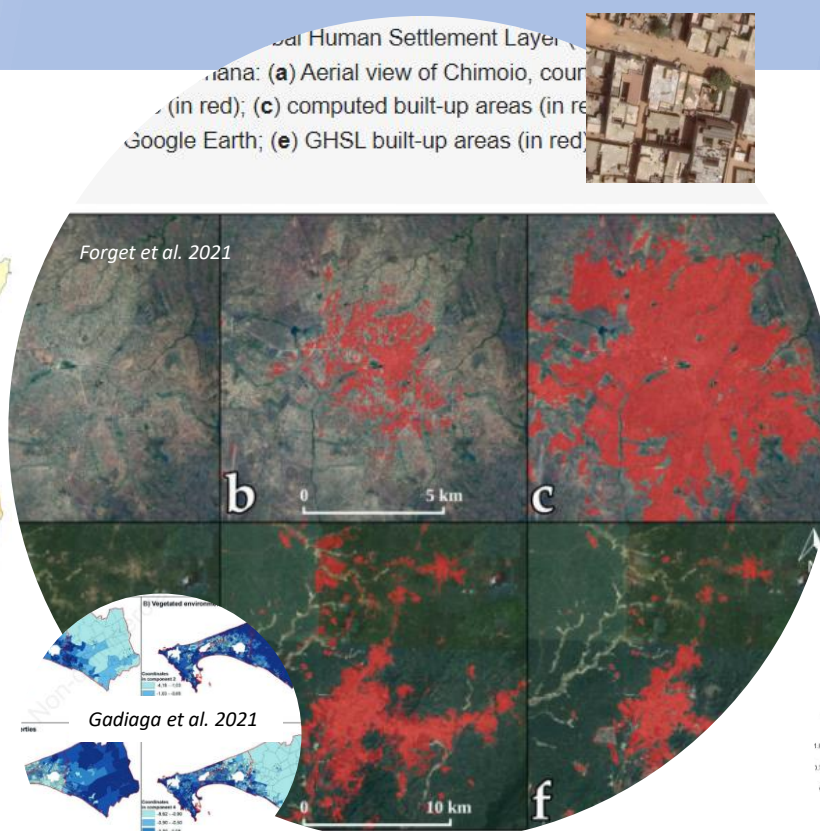


## Geospatial modeling

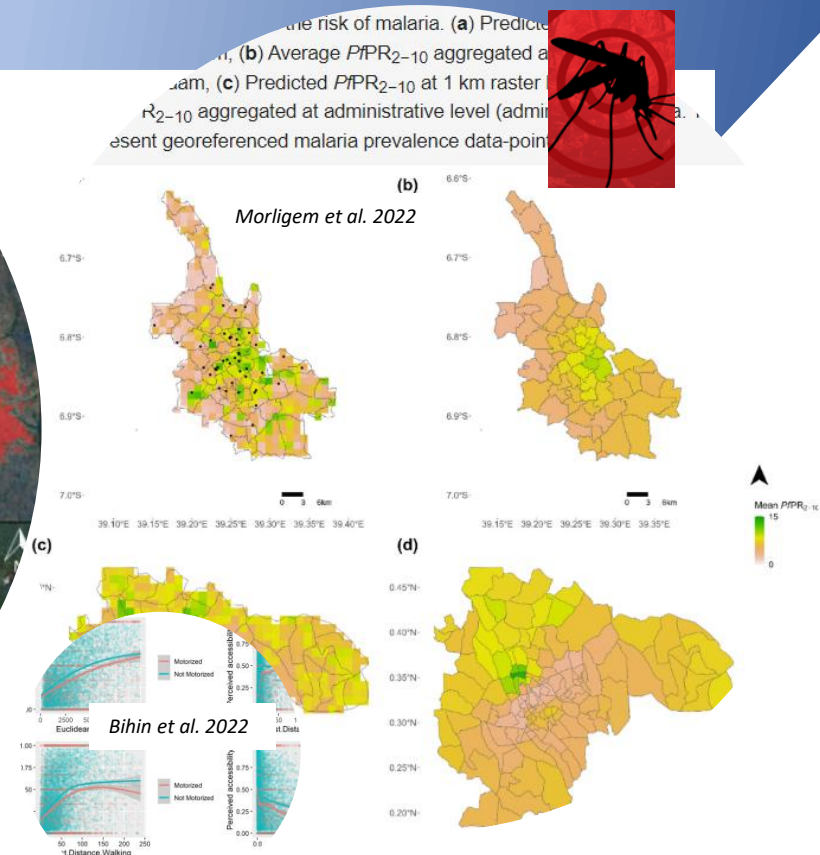
### High resolution population maps



### Urban growth



### Spatial epidemiology



Housing quality

Health accessibility

# Research group: Catherine LINARD



## Group leader

Catherine LINARD

## Postdoc researcher

Sébastien DUJARDIN

## Research Logistician

Florence DE  
LONGUEVILLE

## PhD students

Camille MORLIGHEM

Ines SOPBUE KANGUEM

Joséphine PIETTE

Marie-Aurore UGIRABE

Corentin VISEE

Noel Kanini JOSEPH



## Research projects

- Malaria risk mapping in Senegal: assessing the potential of Sentinel satellite imagery
- Spatiotemporal dynamics of COVID19 in Rwanda
- Impact of urban growth and inter-urban connectivity on mosquito-borne diseases in East Africa
- Mapping areas at risk of transmission of Rift Valley fever and Ebola haemorrhagic fever in Cameroon
- Role of mobility, urban environment and perception in epidemic risk of Dengue
- Impacts of nitrogen deposition in the natural environment on pollen allergy and respiratory infection outcomes in Belgium
- Cell phone and social media data for transformative urban adaptation pathways

## Study areas

- Senegal
- Rwanda
- Kenya and Tanzania
- Cameroon
- Philippines
- Argentine
- Belgium



## Data

- Satellite imagery
- Census and surveys
- Mobile phone
- Social media



## Diseases

- Malaria
- Dengue
- Rift valley fever
- Ebola haemorrhagic fever
- Covid-19
- Respiratory infections

